



# The Global Leader in Movement Solutions

Designing and engineering the best solutions  
for access, positioning, and motion  
in any application, anywhere.

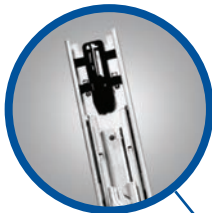
***Accuride***  
*Always Moving Forward*

## Let our Expertise Become Your Success.

Our global team of experts leverage years of proven knowledge and experience to serve your needs. We have developed innovative and dependable movement systems for Tier 1 suppliers and OEMs in major industries, from appliance to healthcare to automotive. Count on us for hands-on support on your project--from concept to final production.



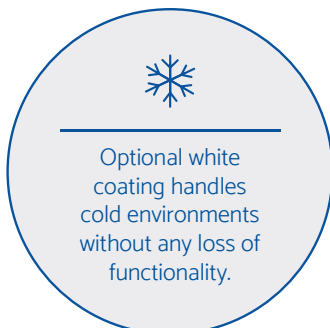
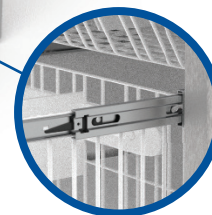
Self-closing slides ensure drawers and trays close when they're supposed to.



Narrow profile provides maximum drawer and tray space.



Specialty drawer slides include lubricants that don't contaminate refrigerated contents.



## Global Resources at Your Disposal

Roll-form machines. Plating lines. Steel mills. Accuride's tremendous in-house resources allow us to tackle your projects, regardless of scale. Our substantial in-house resources, including manufacturing centers around the world, mean timely development and mitigated risk for your projects.

## Solutions Tailored to Your Needs

Our team of engineers are leaders at problem-solving. We excel at building cost-effective, lightweight, and innovative solutions that seamlessly integrate into your designs. Our engineers bring decades of expertise in manufacturing and electrical engineering to the table. We'll work closely with you to develop single components or even complete assemblies for your project. Rest easy: we have field support ready to help you with any challenge.

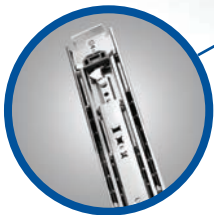
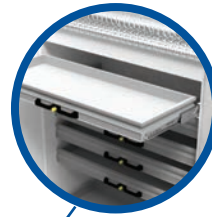


Stainless-steel and aluminum options provide for reliable use in outdoor and moist environments.


Center-sliding console provides convenient personal storage.



Attachable CBHand allows users to retrofit lock-in & lock-out handle systems on heavy-duty slides.



9301E Heavy-Duty Slides support tray and drawer loads up to 42" wide and 600 lbs.



Low BSR: Buzz, Squeak & Rattle

## Built to the Highest Standards

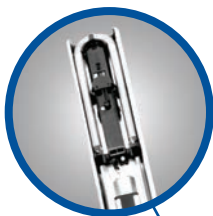
Accuride facilities maintain the highest standard when it comes to quality and production. Our facilities are ISO 9001:2015- and 14011- certified, RoHS compliant, and meet or exceed ANSI standards. We also make customized testing available for unique applications.

## Rapid Prototyping & Time-to-Market

Accuride's model shops are equipped with advanced modeling systems, such as 3D printers and laser cutters. These assets allow us to develop prototypes using a wide range of materials—including aluminum, zinc, and steel—with or without plastic components. Additionally, our many progressive dies and aroll-forms mean quick time-to-market.



A hard anodized and self-lubricating design mean friction guides are virtually maintenance-free.



Light-duty slides available with special features, such as hold-in detents, soft-close, and touch-release.



Corrosion-resistant friction guides require minimal servicing thanks to their simple, robust design.



Linear track system delivers sliding movement for machine guard.



Heavy-duty slide offerings support load capacities from 170 to over 1,300 lbs. Aluminum and stainless-steel options available.

## Added Value. Low Lead Times.

Accuride offers many services, including inventory support, supply chain management, and warehousing. We have long-term partnerships with key vendors and back-up sources for raw materials. These measures ensure on-time delivery and the highest quality products at competitive cost – as well as an industry-leading warranty.

# Our Markets

Accuride delivers custom and large-scale movement solutions for all markets



## Appliance



- Oven racks
- Dishwasher trays
- Refrigerator & freezer compartments

## Aerospace & Watercraft



- Sliding seats in airliners
- Cabinetry in ocean liners
- Pull-out trays

## Cash Handling & Vending



- Cash registers
- Retail kiosks
- ATMs

## Healthcare



- Medical carts
- Nurse server stations
- Patient & supply storage

## Transportation



- Generator storage
- Equipment pull-out
- Sliding consoles

## Automotive



- Glove compartments
- Sliding armrests
- Adjustable seating

## Automation & Machinery



- Printers
- CNC machines
- Packaging & bottling systems

## Telecom & Data Storage



- Server racks
- Blade servers
- Networking

## Architecture



- Commercial cabinetry
- Residential fixtures
- Custom storage



# Your Global Partner

Accuride has design facilities, manufacturing centers, and field engineers throughout the globe. Whatever and wherever the challenge, we're there to help.

## United States

Global Headquarters

12311 Shoemaker Ave.  
Santa Fe Springs, CA 90670

Telephone: (562) 903-0200  
Fax: (562) 903-0208

[www.accuride.com](http://www.accuride.com)  
[oemdirect@accuride.com](mailto:oemdirect@accuride.com)

## United Kingdom

Liliput Rd.  
Brackmills Industrial Estate  
Northampton, NN4 7AS  
United Kingdom

Telephone: +44 (0) 1604-761111  
Fax: +44 (0) 1604-767190

[www.accuride-europe.com](http://www.accuride-europe.com)  
[saleseurope@accuride.com](mailto:saleseurope@accuride.com)

## China

No. 178, Suhong East Road  
Suzhou Industrial Park  
Jiangsu Province, China 215026

Telephone: +86-512-62731200  
Fax: +86-512-62833993

[www.accuride.com.cn](http://www.accuride.com.cn)  
[saleschina@accuride.com](mailto:saleschina@accuride.com)

## Mexico

Calle Circuito Norte No. 6  
Parque Industrial Nelson  
Mexicali, BC, C. 21395  
México

## Germany

Werner-Von Siemens-Strasse 16-18  
65582 Diez/Lahn  
Germany

Telephone +49 (0) 6432-608-0  
Fax: +49 (0) 6432-608-320  
[www.accuride-europe.com](http://www.accuride-europe.com)  
[saleseurope@accuride.com](mailto:saleseurope@accuride.com)

## Japan

44 Minami-asaji  
Iwata Yawata-shi  
Kyoto, Japan

Telephone: +81 (75) 983-7500  
Fax: +81 (75) 983-9500  
[www.accuride.co.jp](http://www.accuride.co.jp)  
[info@accuride.co.jp](mailto:info@accuride.co.jp)

**Accuride**  
*Always Moving Forward*

[www.accuride.com](http://www.accuride.com)



@accurideUS



accurideIntl



accuride-international-inc